



MINIMOTOR - SXCFSS STAINLESS STEEL WORM GEAR MOTOR

SXCFSS 104/M-214
230V 214rpm 27.3 Nm

- IP69K sealing
- Full stainless steel outer parts
- Up to 70Nm rated torque
- Brushless AC motor with resolver feedback



PRODUCT DESCRIPTION

MOTOR: Brushless three-phase 4-pole motor, totally enclosed. Rotor with NdFeB magnets. Thermal cutoff. Winding Class H. Protection IP69K in compliance with IEC/EN 60529 standards. 2-Pole resolver feedback. Bearings with reduced backlash with special grease and high-temperature rubber seal rings. Easy and quick to clean thanks to the smooth surface design. Power 345 to 740W.

GEAR UNIT: worm gear unit with stainless steel gearcase. 50 mm centre distance. Bronze crown. The worm is made of tempered steel, with ground thread. Seal rings in special high-temperature rubber. Lubrication with special long-lasting oil for use in food areas (H1).

There are 12 available gear ratios (i), from 7 to 100.

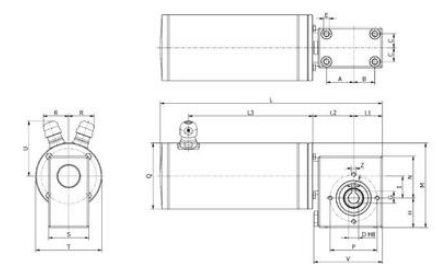
Rated torque up to 70.0 Nm.

[Please click here for 2D and 3D drawings](#)

TECHNICAL DATA

| | |
|------------------|---------|
| Input voltage ac | 230V |
| IP class | IP69K |
| Nominal speed | 214 rpm |
| Nominal torque | 27,3 Nm |

| | |
|---------------|--------|
| Output power | 740 W |
| Rated current | 3,18 A |
| Ratio | 14:1 |



| Type Type Type | A | B | C | D | E | F | G | H | I | L | L1 | L2 |
|----------------------|----|----|----|----|-------|---|------|----|----|-----|----|----|
| SXCFSS80100 | 46 | 56 | 30 | 25 | M8x11 | 8 | 28,3 | 60 | 50 | 397 | 68 | 70 |
| SXCFSS104M | 46 | 56 | 30 | 25 | M8x11 | 8 | 28,3 | 60 | 50 | 402 | 68 | 68 |

| Type Type Type | L3 | M | N | P | Q | R | S | T | U | V | Z | Free Mount center Point AG |
|----------------------|-------|-----|----|----|-----|------|----|-----|------|-----|------|--|
| SXCFSS80100 | 226,5 | 155 | 81 | 75 | 90 | 33,5 | 81 | 90 | 80,5 | 135 | M8x9 | 13,78 |
| SXCFSS104M | 227,5 | 170 | 81 | 75 | 120 | 33,5 | 81 | 120 | 76 | 135 | M8x9 | 18,90 |

